

OPENING DOORS SINCE 1843

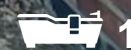


GOLD WINNER

LETTING AGENT
IN COVENTRY
(CENTRE)

Kingston Road
Coventry, CV5 6LP

Offers Over £175,000



Kingston Road

Coventry, CV5 6LP

A fantastic starter home or investment property, located in the highly sought after area of Earlsdon and offered with no onward chain.

This traditional mid terrace home comprises a lounge, separate dining room, a kitchen with access out onto the low maintenance rear garden, ground floor family bathroom and two double bedrooms to the first floor both with build in wardrobes.

Further benefits include gas central heating and double glazing throughout.

If you're looking to sell your property please contact us here for a FREE Market Appraisal <https://valuation.loveitts.co.uk/home/835-loveitts>



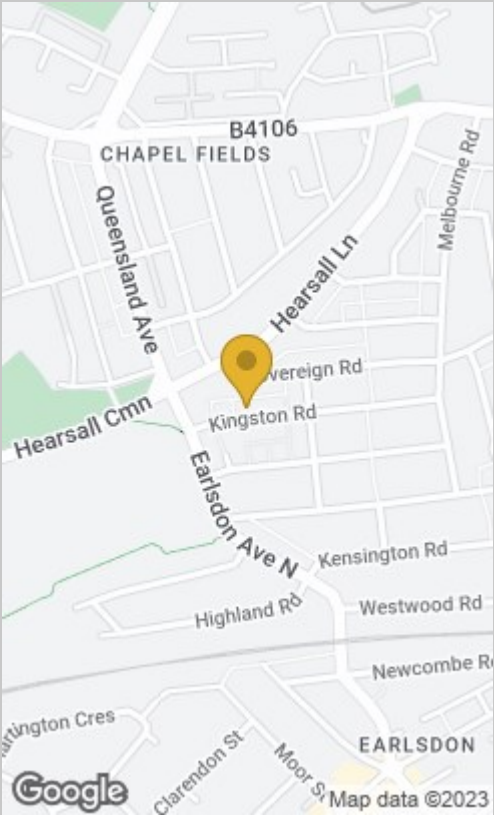
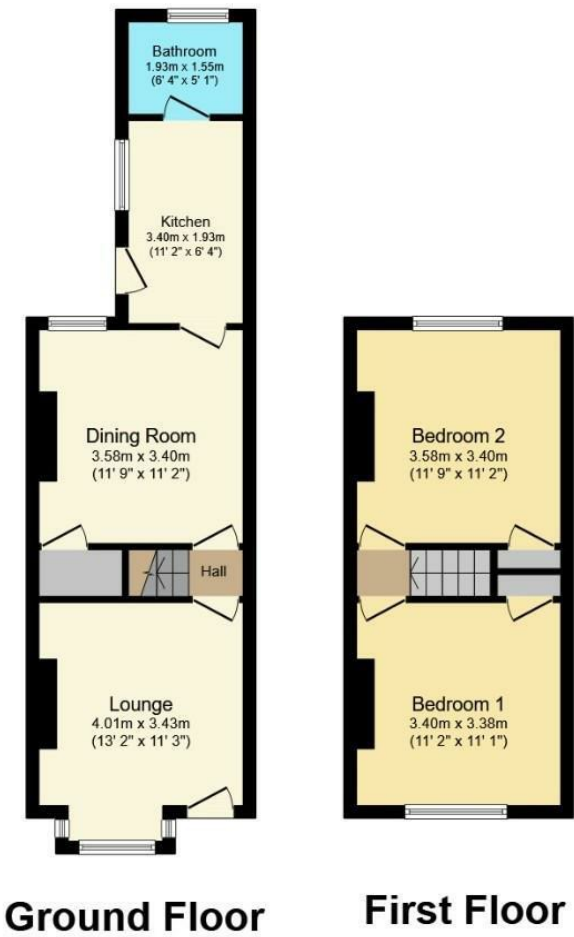


- Investment Opportunity
- Great First Time Purchase
- Two Double Bedrooms
- Two Reception Rooms
- Fitted Kitchen
- Ground Floor Bathroom
- Low Maintenance Rear Garden
- No Onward Chain
- Sought After Location




Floor Plan

Area Map



Total floor area 65.6 sq.m. (706 sq.ft.) approx

This Floor Plan is for illustration purposes only and may not be representative of the property. The position and size of doors, windows and other features are approximate. Unauthorized reproduction prohibited. © PropertyBOX

Energy Efficiency Rating		
	Current	Potential
Very energy efficient - lower running costs		
(92 plus) A		87
(81-91) B		
(69-80) C		
(55-68) D	59	
(39-54) E		
(21-38) F		
(1-20) G		
Not energy efficient - higher running costs		
England & Wales		EU Directive 2002/91/EC 

These particulars, whilst believed to be accurate are set out as a general outline only for guidance and do not constitute any part of an offer or contract. Intending purchasers should not rely on them as statements of representation of fact, but must satisfy themselves by inspection or otherwise as to their accuracy. No person in this firm or its employees has the authority to make or give any representation or warranty in respect of the property.



Coventry
29 Warwick Row, Coventry CV1 1DY
024 7625 8421

Registered in England & Wales Company no. 7558151